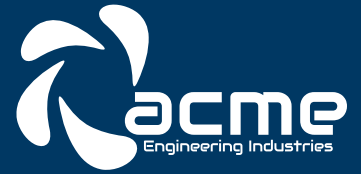


POWER the future
through *INNOVATION*



Committed to
EXCELLENCE



ABOUT US

- ACME Engineering Industries was Established In 1985 By A Group of technical professional for the purpose of manufacturing mechanical seal pump for chemical, Food industries and engineering industries, dairy industries and pharmaceutical industries..
- The current management group assured controlling interest of 25 year old manufacturing company and properly design a feel engineering technology improvement and enhance the capability and capacity.
- Acme market as top priority strengthened its reputation for manufacturing excellent go product to its portfolio.
- Our company offer complete engineering services ranging from all application review system designs, testing, and production.
- Acme is recognized solution integrator and provider of nich product.
- Acme initiative on total quality management has resultant in ISO 9000 certification for its manufacturing facility located at Ahmedabad (Gujarat) India.

Reliability

- Acme ensures reliability to our customers and provider the most important and critical component of any sealing system resulting highest customers satisfaction
- Close to 10 years of design experience.
- Extensive application engineering experience.
- Short reach time for development, production to meet customer's needs.
- In house testing and qualification services.
- The most responsive but technical.
- Services in process and pump industry.

Customer Service

Acme is not just believe in slogan but it is a companywide commitment always remains most important customer focus. Acme team member will direct you to specific resource right way provide a sealing solution that meet technical and commercial requirement.

Customer has been a key component to our exceptional customer services. Once a new application or trouble shooting with existing application, Acme team immediately take action to provide a solution that resolves question effectively and efficiently.

VISION & MISSION

Vision

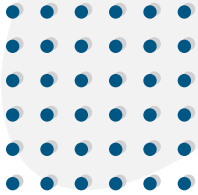
We are dedicated is creating unique business policy that achieves success for our customers this doing with integrity, respect and with full-deep commitment to provide consistent excellence performance in sealing solutions

Mission

Acme mission is to provide customers with most cost effective, efficient sealing solution for stop leak application through technological most reliable product and delivery. We will satisfy our customer, employees, stakeholder and community, society.



I N D E X



01

POSITIVE ROTARY LOBE PUMP

03

S. S. PUMP

04

GEAR PUMP

05

HELICAL GEAR PUMP

06

SANITARY DESIGN MILK PUMP

07

PORTABLE MILK PUMP

08

CENTRIFUGAL PUMPS

09

SHEAR PUMP

10

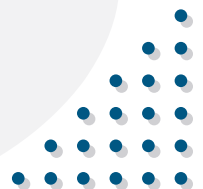
PROCESS PUMP

11

SELF-PRIMING PUMP

12

MANUFACTURING FACILITY



POSITIVE ROTARY LOBE PUMP

ALB SERIES



Capacity Chart

PUMP MODEL	PORT SIZE STANDARD	DISPLACEMENT @100rpm		MAX. SPEED (RPM)	PRESSURE (Kgf/cm ²)	WEIGHT (Kg)	
		LPM	US. GPM			HORIZONTAL PORTING	VERTICAL PORTING
ALB-100S	1"	5	1.4	1000	7	15	16
ALB-100L	1"	8	2.25	1000	7	17	18
ALB-150S	1 ½"	12	3.38	1000	7	28	30
ALB-150L	1 ½"	18	4.78	1000	7	30	31
ALB-200S	2"	26	7.03	1000	7	52	55
ALB-200L	2"	38	10.15	1000	7	55	58
ALB-250S	2 ½"	55	14.64	1000	7	104	110
ALB-250L	2 ½"	79	20.87	1000	7	109	115
ALB-300S	3"	116	30.65	600	7	150	150
ALB-300L	3"	175	44.39	600	7	158	158
ALB-400S	4"	261	68.70	500	7	258	258
ALB-400L	4"	354	93.26	500	7	264	264

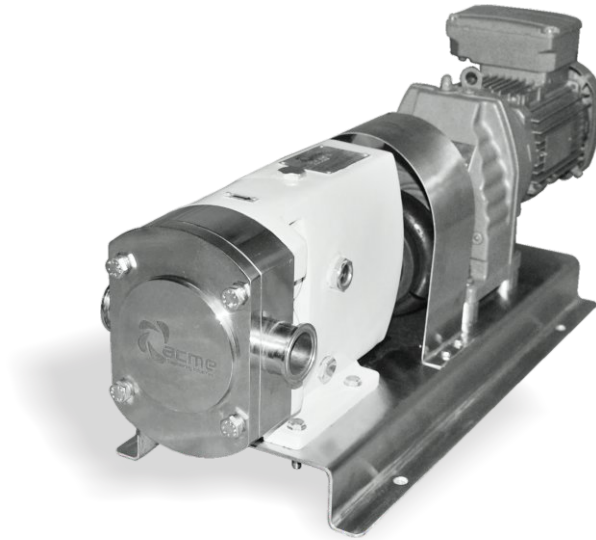
Application

Industry Pump:

- | | |
|-------------|--------------|
| Oil | Dairy |
| Waste water | Bakery |
| Sludge | Meats |
| Chemicals | Canned Foods |
| Asphalt | Beverages |
| Excretions | Candy |
| Paints | Drugs |
| Polymers | Syrup |
| | Cream |
| | Dressing |
| | Cosmetics |
| | Flavoring |

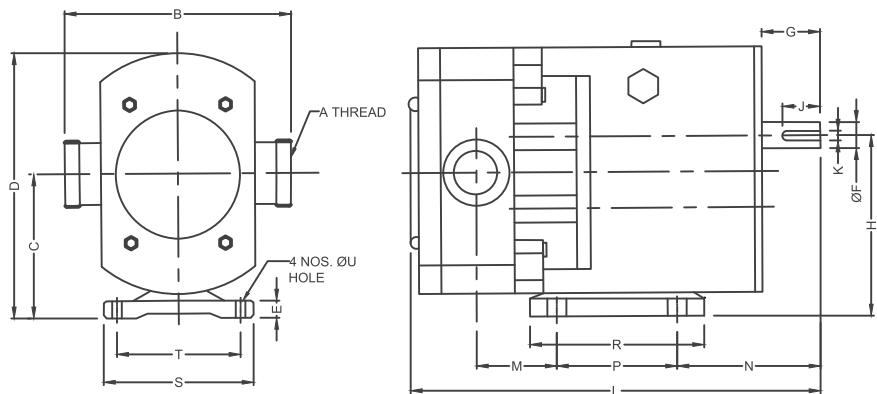
Typical Characteristics:

- Front Loading Seals
- Smooth Flow
- Gentle Product Handling
- Dry Running Ability
- Efficient Transport and Dosing
- Handles Low & High Viscosity Products
- Outstanding Operation & Efficiency
- Simple Maintenance
- Hygienic Design
- Low Sound Level



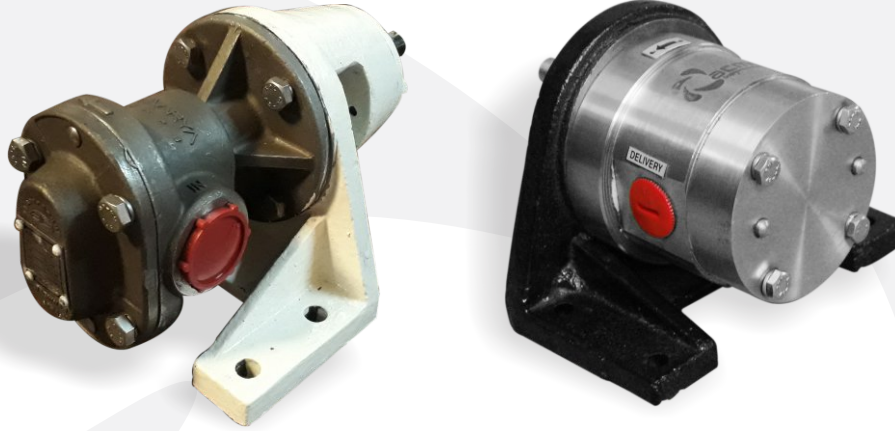
MODEL	A	B	C	D	E	F	G	H	J	K	L	M	N	P	R	S	T	U
ALB-100 S/L	1"	140	90	175	11	16	37	113	30	5	270/278	43/49	124	70	140	100	80	12
ALB-150 S/L	1 ½"	180	115	220	12	22	45	145	35	6	327/338	50/70	138	100	152	125	100	12
ALB-200 S/L	2"	216	137	270	18	28	58	175	45	8	445/467	83/88	176	125	180	154	125	14
ALB-250 S/L	2 1/2"	280	163	315	18	38	75	211	63	10	455/473	93/103	163	150	200	184	150	14
ALB-300 S/L	3"	315	214	405	30	45	110	274	75	14	510/530	88/108	145	210	250	240	210	14
ALB-400 S/L	4"	370	230	435	30	48	110	300	75	14	600/620	100/123	172	230	272	240	200	16

SR NO.	PARTS	MOC
1	Pump Chamber	SS-316
2	Tri-Lobe Rotor	SS-316
3	Top Cover	SS-316
4	Shaft	SS-316
5	Shaft Seal	Mech. Seal
6	Gear	EN-24
7	Casing	CI
8	Back cover	CI
9	Bearing Speller	CI
10	Bearing	SKF



S. S. PUMP

AGP SERIES



PUMP MODEL AGP	SUCTION AND DELIVERY	CAPACITY AT 1440 RPM			MAX. PRESSURE KG/CM2	MOTOR H.P. REQD.	WT OF BARE PUMP (KG.)
		LPM	US	M3/HR			
AGP-025	½" x ¼"	8.3	2.2	0.5	10 kg	0.75 HP	2.0
AGP-40	3/8" x 3/8"	16.6	4.4	1.0	10 kg	1 HP	3.0
AGP-50	½" x ½"	25	6.6	1.5	10 kg	1 HP	3.50
AGP-75	¾" x ¾"	33	8.8	2.0	10 kg	1.5 HP	4.50
AGP-100	1" x 1"	50	13.2	3.0	10 kg	2 HP	5.0
AGP-125	1 ¼" x 1 ¼"	100	26.4	6.0	10 kg	3 HP	7.0
AGP-150	1 ½" x 1 ½"	125	33	7.5	10 kg	5 HP	10.50
AGP-200	2" x 2"	150	39.6	9.0	10 kg	7.5 HP	20.50
AGP-200	2" x 2"	200	52.8	12.0	10 kg	7.5 HP	24.0
AGP-250	2 ½" x 2 ½"	250	66	15.0	10 kg	12.5 HP	35.0
AGP-250	2 ½" x 2 ½"	300	79.2	18	10 kg	12.5 HP	40

Features

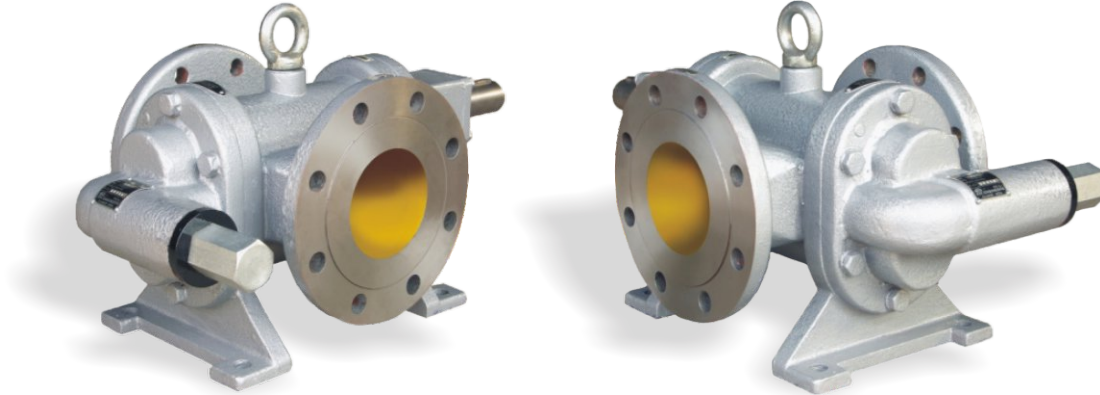
- Complete SS-316 (CF&M) Investment Casting
- Nitrided Gears and Shafts for Longer Life
- Teflon Coated Bush for Smooth Performance
- Optimum Internal Clearance for Accurate Capacity and Lower Power Consumption
- Double Helical Gear Design from SS-100 Onwards.

Application

- Chemical Industry
- Pharmaceutical Industry
- Dyeing & Printing Houses
- Paint Industry
- Food & Beverages

GEAR PUMP

AERN SERIES



A	B	C	D	E	F	G	H	I	J	K	L	M	N	O	P
MODEL	SIZE	CAPACITY			HORSE POWER & CAPACITY CHART										PUMP WT.
		SPEED	LPM	US GPM	M3/HR	X' 1	2	3	4	5	7	8	10	12	
050-S			8.3	2.2	0.5	0.2	0.23	0.27	0.3	0.32	0.36	0.38	0.43	0.47	
050-M	½" X 1/2"		16.6	4.4	1	0.24	0.28	0.32	0.36	0.4	0.48	0.52	0.6	0.68	8
050-L			25	6.6	1.5	0.3	0.36	0.41	0.47	0.52	0.63	0.7	0.81	0.93	
100-S			33.3	8.8	2	0.37	0.45	0.54	0.62	0.69	0.85	0.92	1.09	1.25	
100-M	1" X 1"		41.5	11	2.5	0.38	0.48	0.57	0.65	0.76	0.95	1.08	1.23	1.41	14
100-L			50	13.2	3	0.4	0.5	0.6	0.75	0.89	1.17	1.3	1.59	1.85	
150-S			83.3	22	5	0.7	1	1.2	1.4	1.5	1.95	2.15	2.55	2.95	
150-M	1 1/2" X 1 1/2"		100	27.6	6	0.85	1.1	1.35	1.55	1.77	2.22	2.45	2.9	3.45	22.5
150-L			125	33.3	7.5	1.05	1.45	1.95	2.1	2.4	2.95	3.25	4	4.9	
200-S			150	39	9	1.35	1.8	2.45	3	3.5	4.5	5.25	6.35	7.6	
200-L	2" X 2"	1440 RPM	200	52.8	12	1.8	2.4	2.95	3.5	4.05	5.15	5.7	6.9	8.1	28
250-S			250	66	15	2	2.5	3.2	3.75	4.3	5.6	6.2	7.7	9.5	
250-L	2 1/2" X 2 1/2"		333	88	20	3.8	4.65	5.5	6.35	7.25	9.05	10.5	12.2	14.35	43
300-S			415	105	25	5	6	7	8	9	11	12	14.25	16.5	
300-L	3" X 3"		500	132	30	6	7.35	8.65	10.15	11.45	14.05	15.4	17.9	21	59
400-S		666.6	176	40	8.85	10.5	12	13.65	16.25	18.25	20	22	25.5		
400-L	4" X 4"	833.3	220	50	9.5	11.5	14	16	18	22.5	25	30	35.5	82	
500-S		1000	264	60	14.5	17.2	19	22	24.8	30	32.4	37.2	42.5		
500-L	5" X 5"	1250	330	75	17.5	20.5	23.5	27	30.5	36.5	40	46	53	150	
600-S		1660	440	100	21.5	25.55	30	34.55	40	48.85	52.9	62	72		
600-L	6" X 6"	2083	550	125	25.5	31	36	41.5	46.5	57	63	72	81	175	

Features

- Herrigbone rotors design eliminates side thrust
- Modified tooth profile enhances the tooth life
- Floating gear-design ensures uniform load distribution
- Low-leakage path by design improve volumetric efficiency
- Extra thick shaft reduces bending effectively

HELICAL GEAR PUMP

ASG SERIES



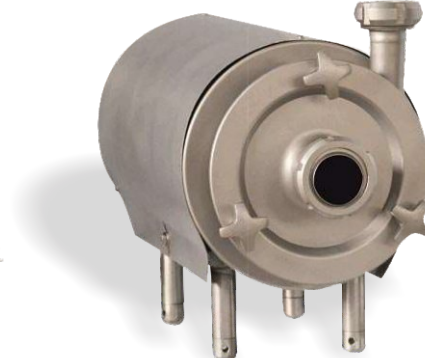
PUMP MODEL	INLET OUTLET SIZE	CAPACITY			"RECOMMENDED MOTOR HP AT A DIFFERENTIAL PRESSURE OF 'X' Kg/Cm2 WITH 1500 SSU VISCOSITY & SPECIFIC GRAVITY @ 0.8g/CC										WT OF BARE PUMP SHAFT IN KG.	
		LPM	US GPM	M3/HR	1	2	3	4	5	6	7	8	9	10		
ASG-050	1/2" X 1/2"	20	5.3	1.2	0.5					0.75					2.8	
ASG-075	3/4" X 3/4"	30	7.92	1.8	0.5			0.75			1				4.5	
ASG-100	1" X 1"	50	13.2	3	0.5	0.75		1			1.5				6.2	
ASG-125	1 1/4" X 1 1/4"	75	19.8	4.5	1	1.5			2			3			8.5	
ASG-150	1 1/2" X 1 1/2"	110	29	6.6	1.5		2		3			5				10.5
ASG-200	2" X 2"	225	59.4	13.5	3			5			7.5				18	
ASG-250	2 1/2" X 2 1/2"	350	92.5	21	5	7.5		10			12.5				27.3	
ASG-300	3" X 3"	500	131.6	30	10	12.5			15			20				37

Features

- Single Helical Gears
- Hardened & Ground Shafts.
- Max. Capacity-500 Lpm
- Max. Pressure-10 Kg/cm2
- Max. Temperature-80°C
- Modified Version For High Temp. Up To-200°C
- Modified Version For Molasses and Vacuum Application
- Higher Aesthetic Value

SANITARY DESIGN MILK PUMP

ACFSIC SERIES



Introduction:

The ACME Sanitary design Centrifugal Pump is manufactured in 304/316 stainless steel. Pumps provide superior smooth and clean surface due to high surface finish. Rigid shaft design will eliminate vibration, increase bearing life and low maintenance cost of mechanical seals. All pumps are very economical and we provide best after sales service. All models are design in the way that you can easily interchange the motor with any standard IEC available motor. Our fully-trained engineers can help solving problems in operation and installation.

Benefits:

- Sanitary design ensures hygienic standards for liquid transfer
- Ease of assembly and disassembly for frequent from cleaning
- Better surface finish for less frictional losses and more efficiency
- Adjustable base as per sanitary standards
- Designed for CIP(Cleaning in Place) and SIP(Sterilizing in Place)
- Cost Effective maintenance
- Motor shroud will ensure cleaning of any spillage

Specification:

• Moc :

• CASING	:	SS304/SS316
• IMPELLER	:	SS304/SS316
• IMPELLER NUT	:	SS304/SS316
• BACK PLATE	:	SS304/SS316
• SHAFT	:	SS304/SS316
• EXTENSION BRACKET	:	CI/SS304
• LEGS	:	SS304
• MOTOR SHROUD	:	SS304

• Mechanical Seal Options :

(Single or Double mechanical seal Available)

Stationary Face

- SILICON CARBIDE(SiC)
- TUNGSTON CARBIDE(TC)
- STELITE
- SS

Rotary Face

- CARBON
- SILICON CARBIDE(SiC)
- TUNGSTON CARBIDE(TC)
- RULON
- PTFE

Applications:

• Food Industry

- Milk
- Cream
- Animal oil
- Flavoring
- Vegetable juice
- Vinegar

• Beverage Industry

- Beer
- Fruit juice
- Wine
- Soft drinks

• Pharmaceutical

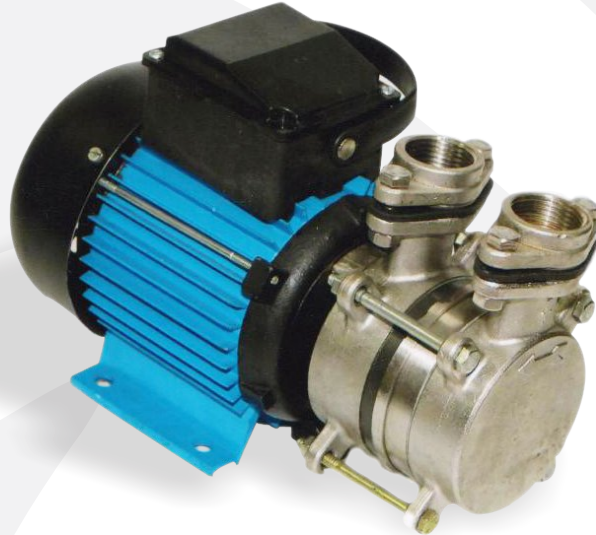
- Syrups
- Pharma liquid
- Extracts
- Lotions
- Cologne
- Emulsions
- Mouth wash
- Water

• Chemical Industry

- Detergents
- Dyes
- Cleansers
- Paint
- Ink

SELF-PRIMING PUMP

SP SERIES



MODEL	SIZE	HP	RPM	HEAD (M)	2	5	10	15	20	25	30	35	40
SP-2	1"X1"	0.5	2900	CAPACITY	36	31	27	23	18	13	8	-	-
SP-3	1"X1"	1	2900	LPM	54	49	45	42	38	32	26	20	13

Pump Features

- Self Priming Action. No Need Of Foot Valves.
- All Ss 316 Contact Parts
- Sealing By Mechanical Seal
- Compact Design And Efficient Operation.

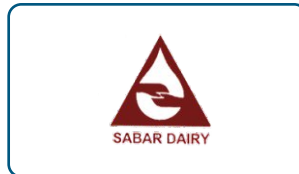
Application

- Useful For Unloading Of Chemicals, Syrups, Kerosene, Solvents Etc.
- For Pharmaceutical, Beverages & Dm Water
- Textile Dyes, Ro Water Plant Etc.

MANUFACTURING FACILITY



CLIENTS



OUR Network



Our Authorised Representatives

Nuco Engineering Limited

18, Morc Des Flamboyants
Soreze, Pailles, Mauritius.
Cell : +230 - 525 84540

Agri Business Machine International

No 10 Gunaratna Place,
Off Park Road, Colombo-05.
Cell : +94 - 0779869868



ACME Engineering Industries

82, Ashokpura, Nr. Dudheshwar Cross road,
Dudheshwar, Ahmedabad, Gujarat (India) 380 004
Office : +91 079 256 256 15
Cell : +91 98258 53444 , +91 9510 6269 45
Email : info@acmepumpindia.com
Website : www.acmepumpindia.com



QR Code